

Escada de 4 elementos:



Escada de 3 elementos: (outra cor)



Agora reunam as escadas:



4 mais 3 \rightarrow 4 + 3

Vertical

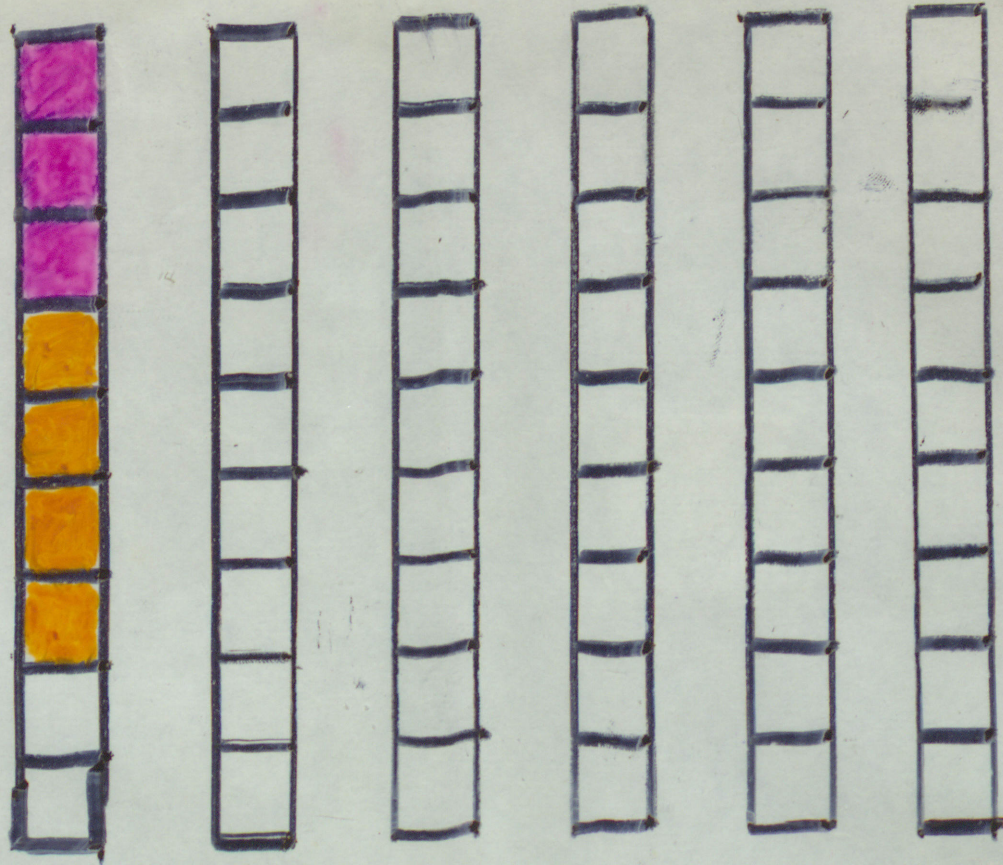


$$\begin{array}{r} 4 \\ + 3 \\ \hline 7 \end{array}$$

horizontal



$$4 + 3 = 7$$



(3,4)

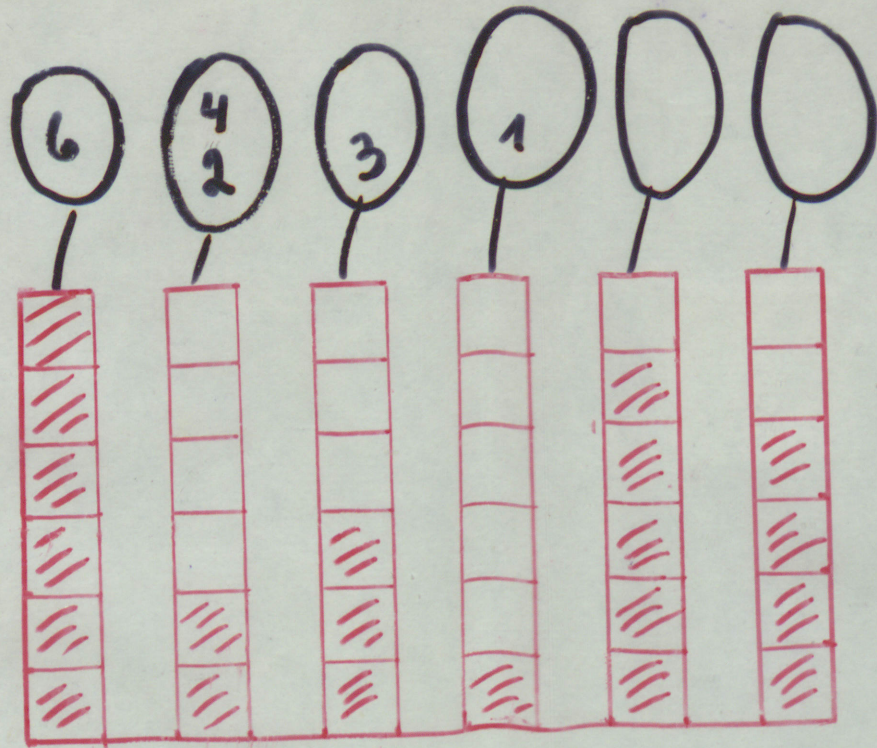
(5,3)

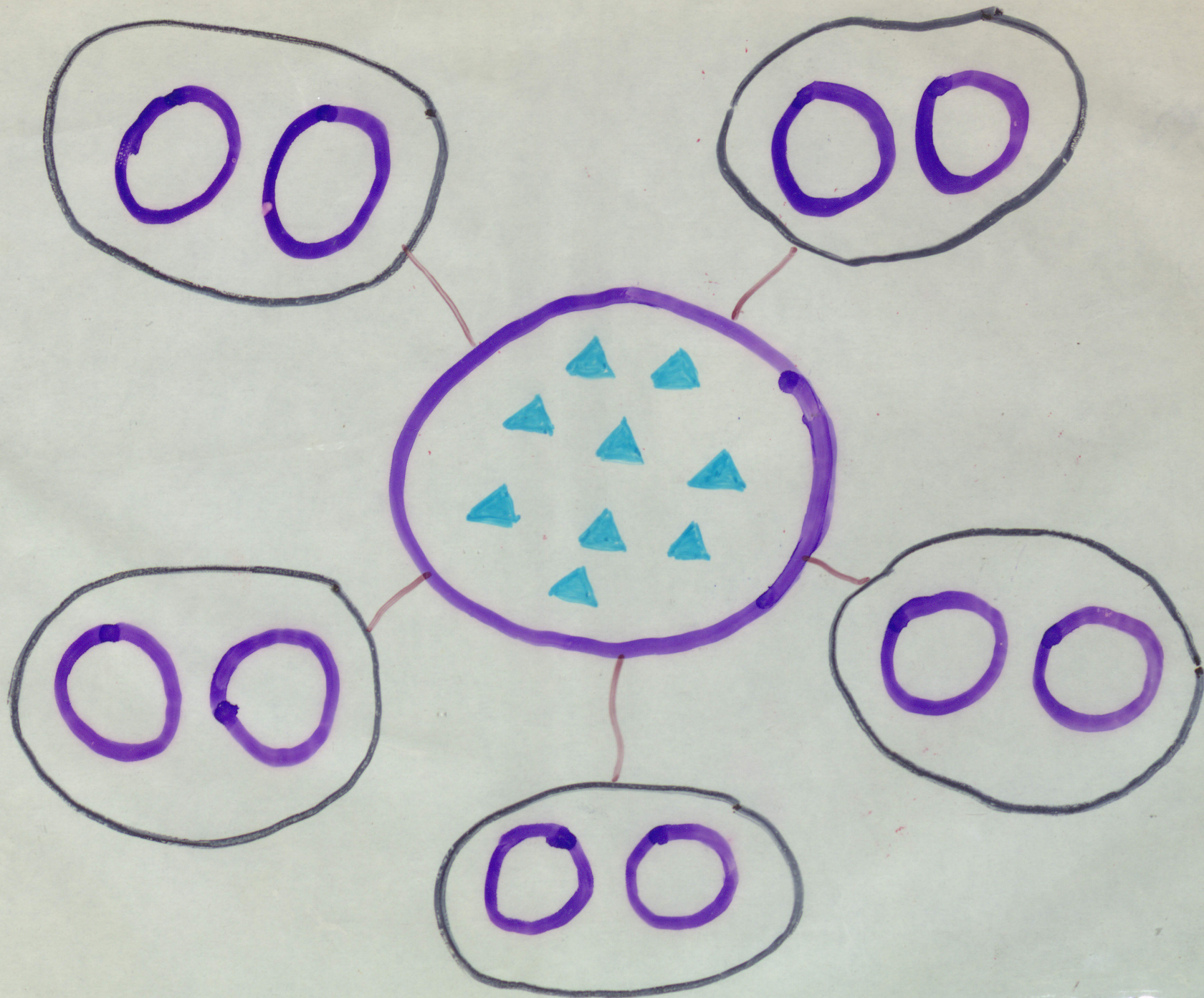
(7,1)

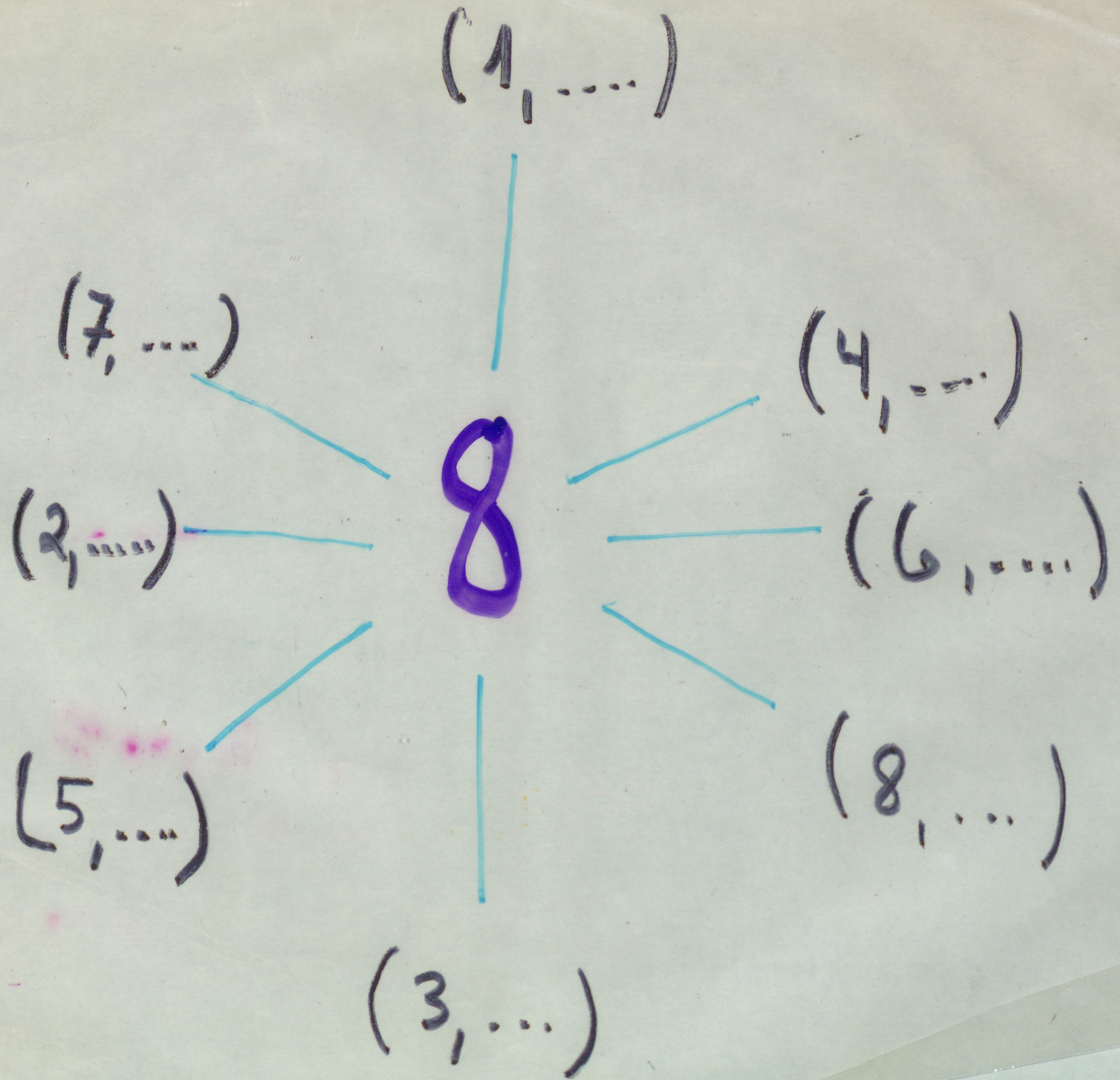
(4,5)

(1,8)

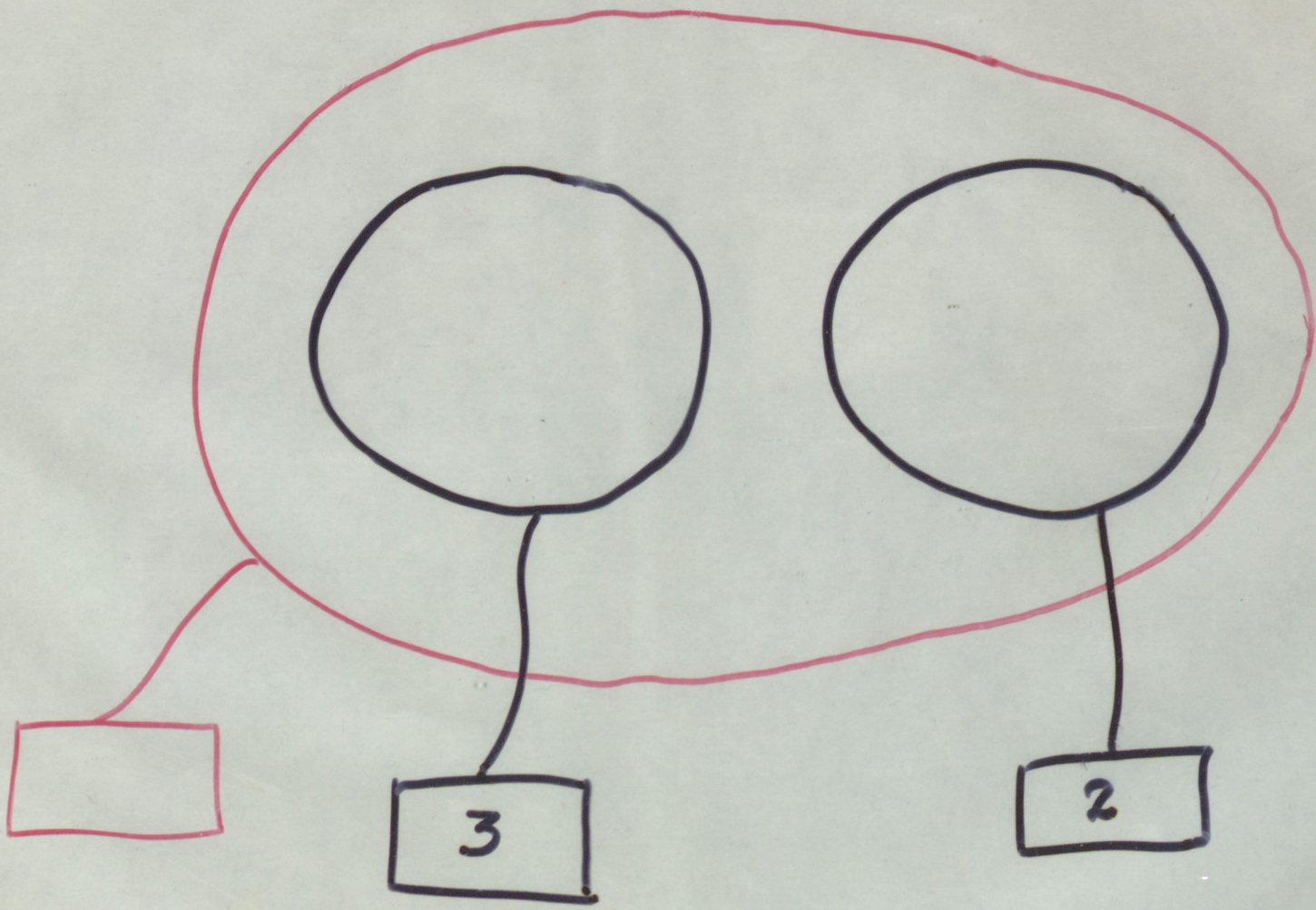
(6,3)



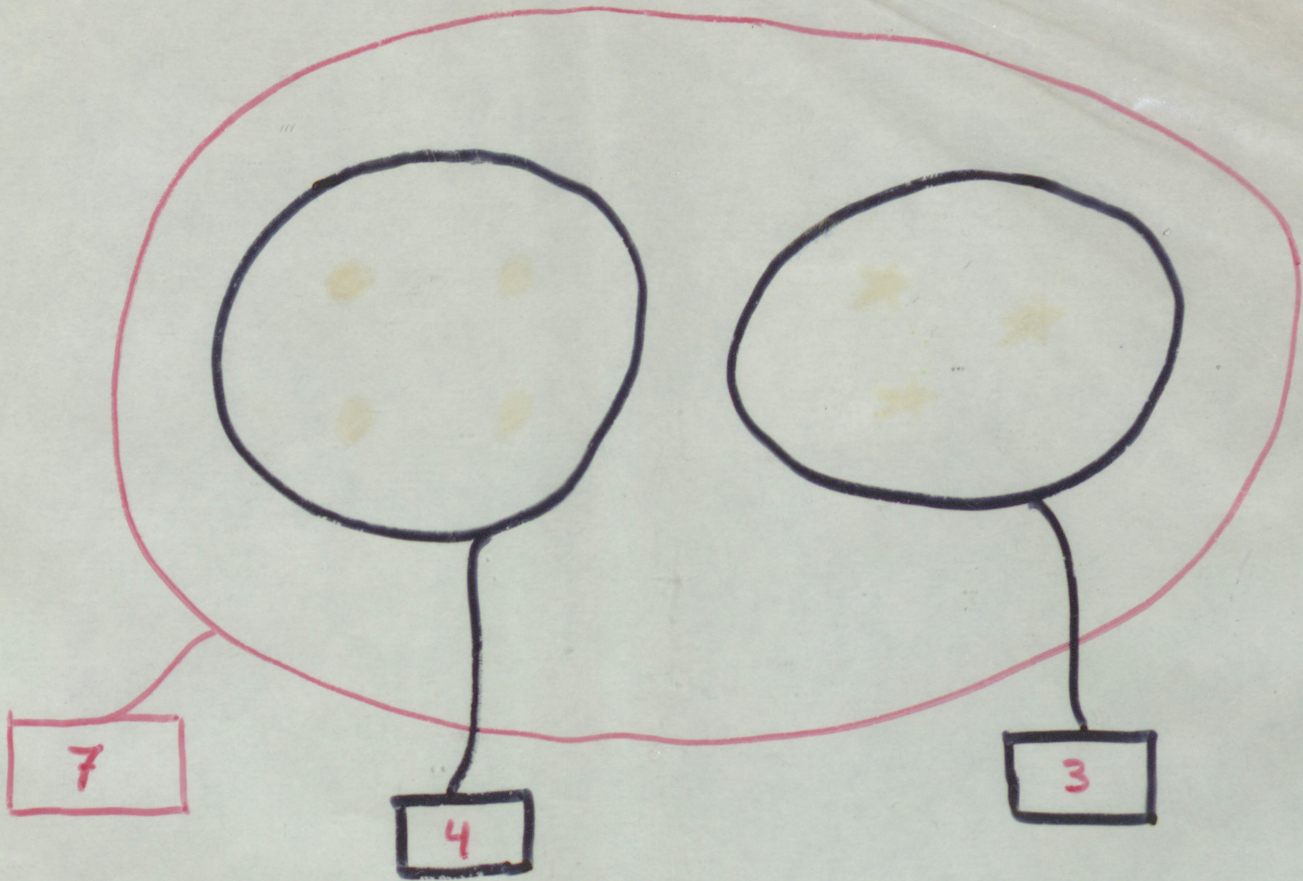


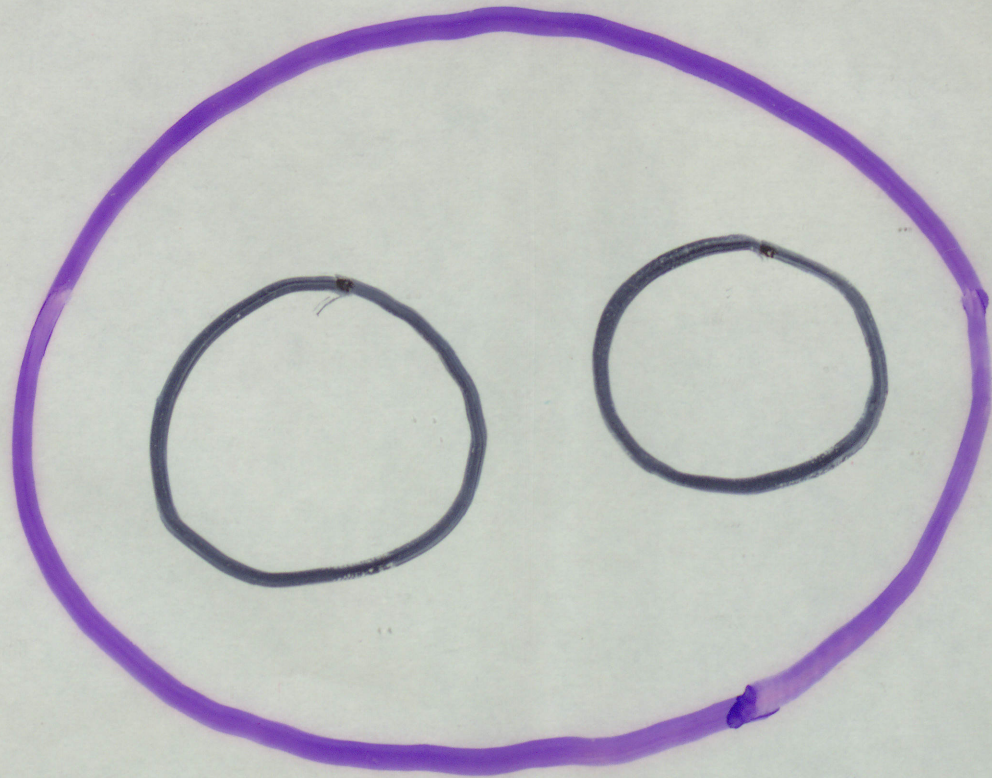


6

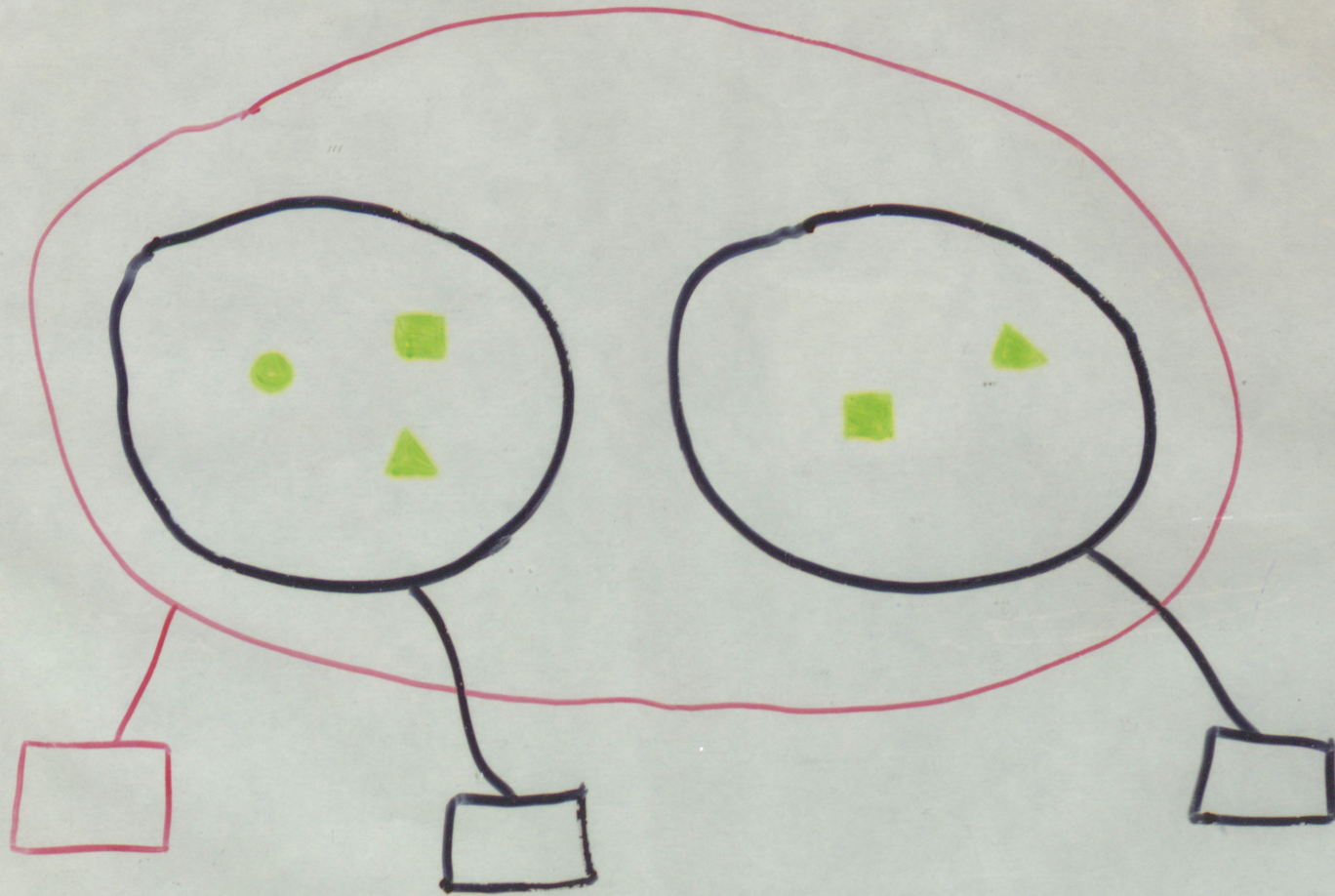


6

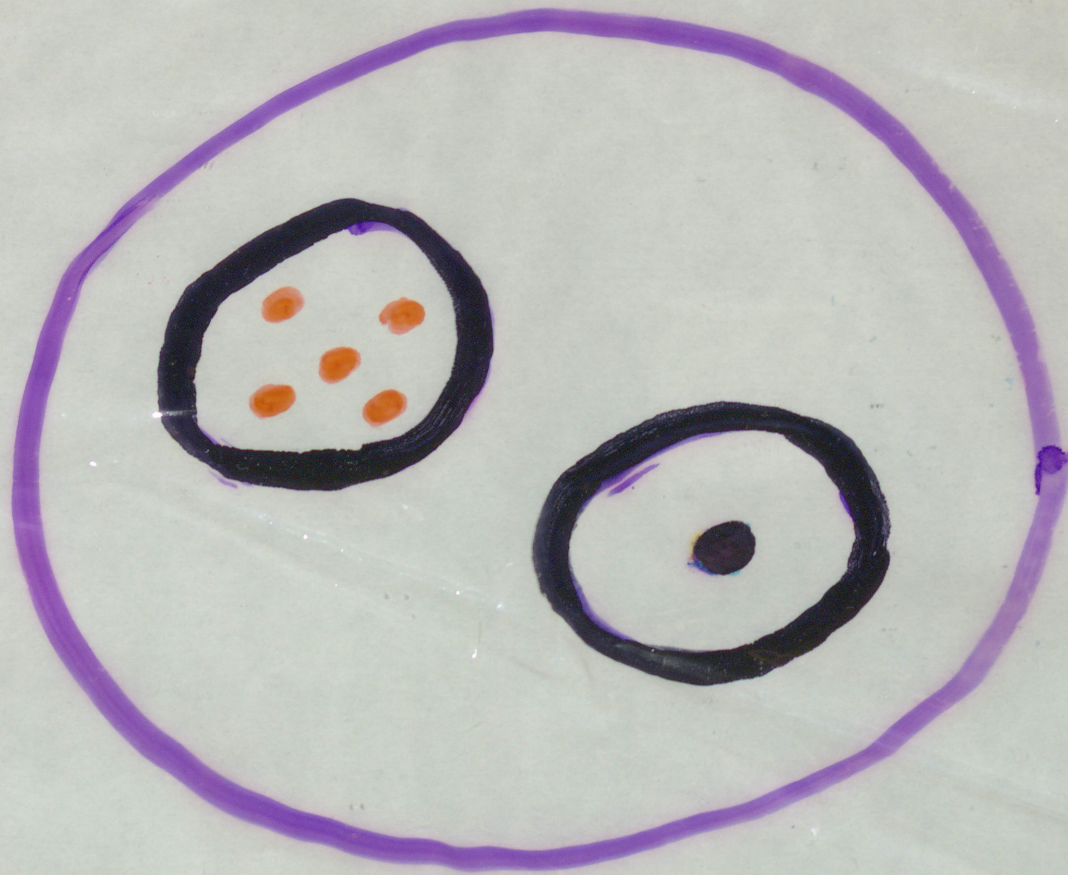




(4.2)

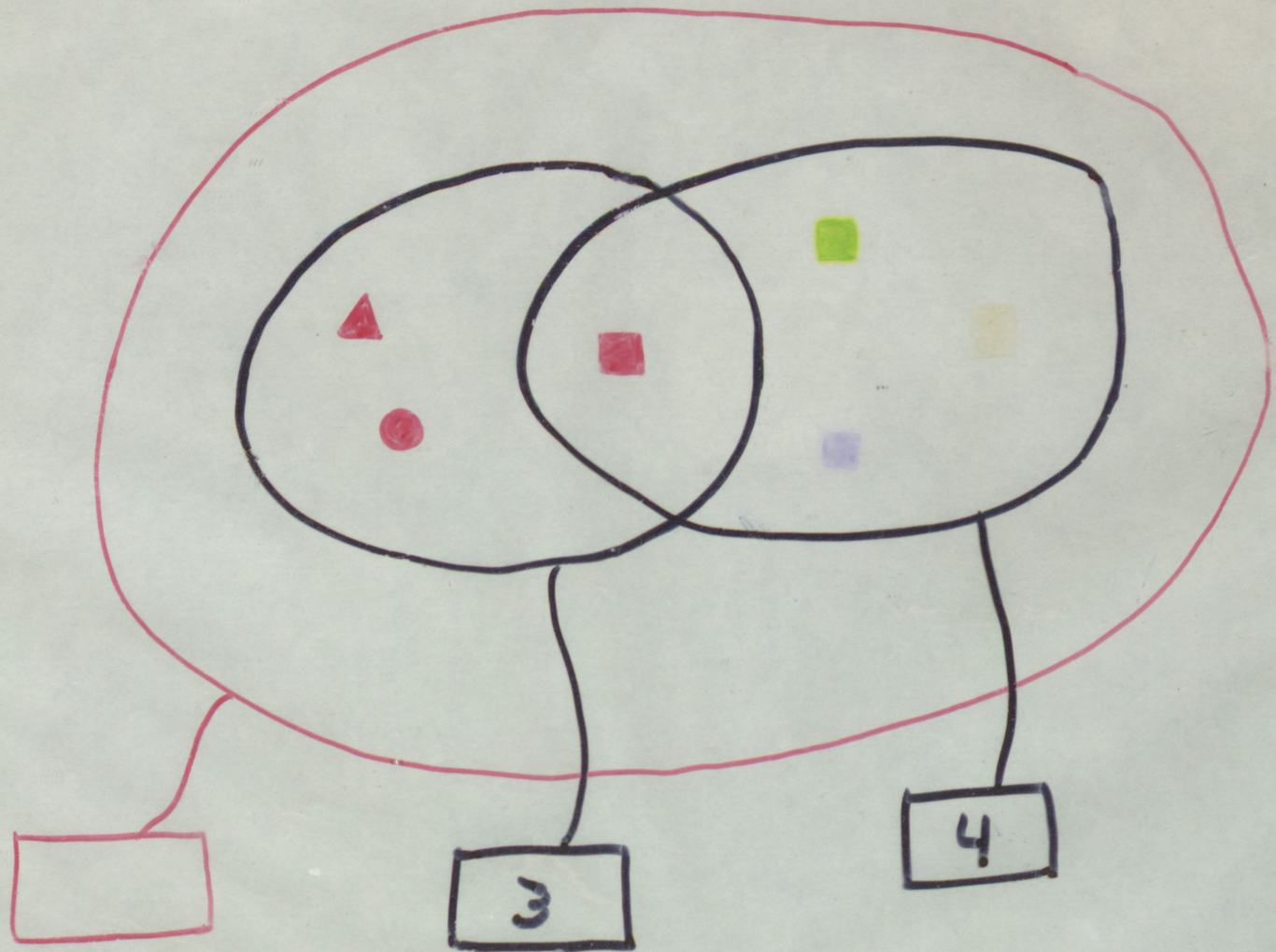


2



(5, 1)

2)



2